



KANOMAX
The Ultimate Measurements

MODEL.6715


USB DRIVER INSTRUCTION MANUAL




01001

1406

1 : Insert the CD-ROM into the disk driver. Then open the

folder  6715 USB Driver . If your system is 32bit, double

click  to begin the installation. If your system is

64bit,double click  to begin the installation. After the

screen shown in Figure1-1 is displayed, press “Next”.

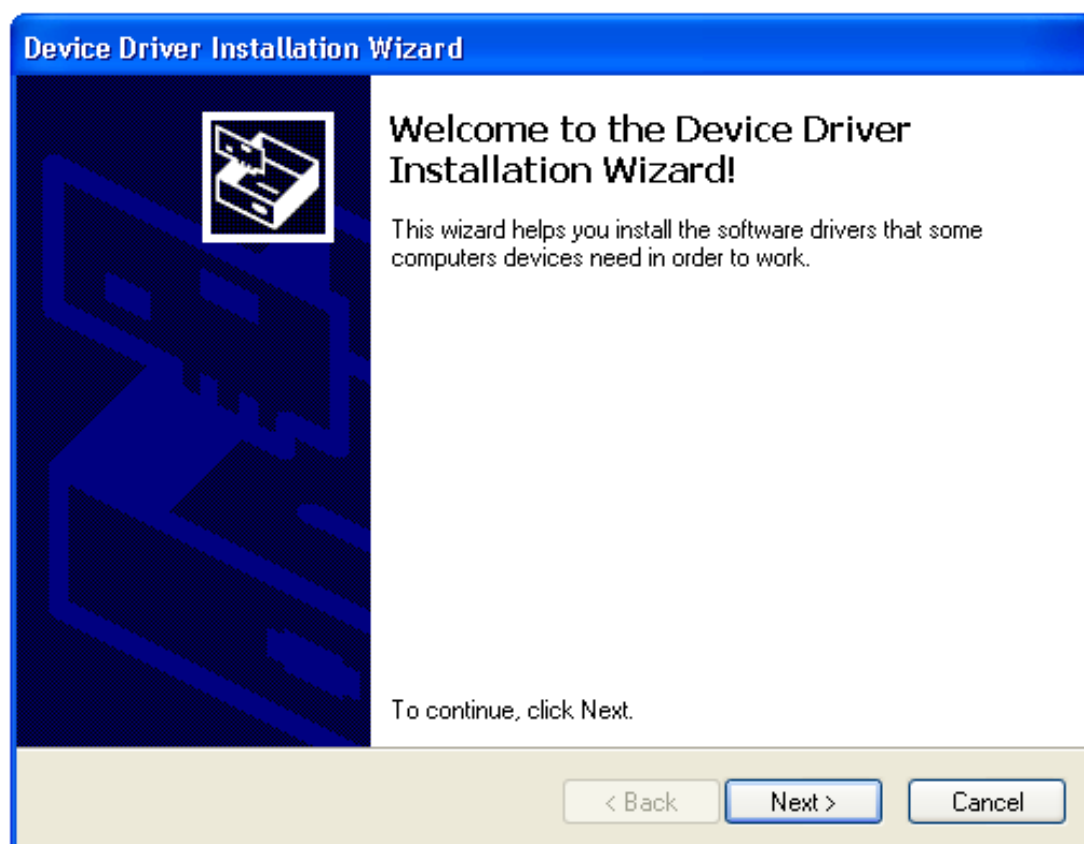


Figure1-1

2:Then the screen shown in Figure 1-2 appears.

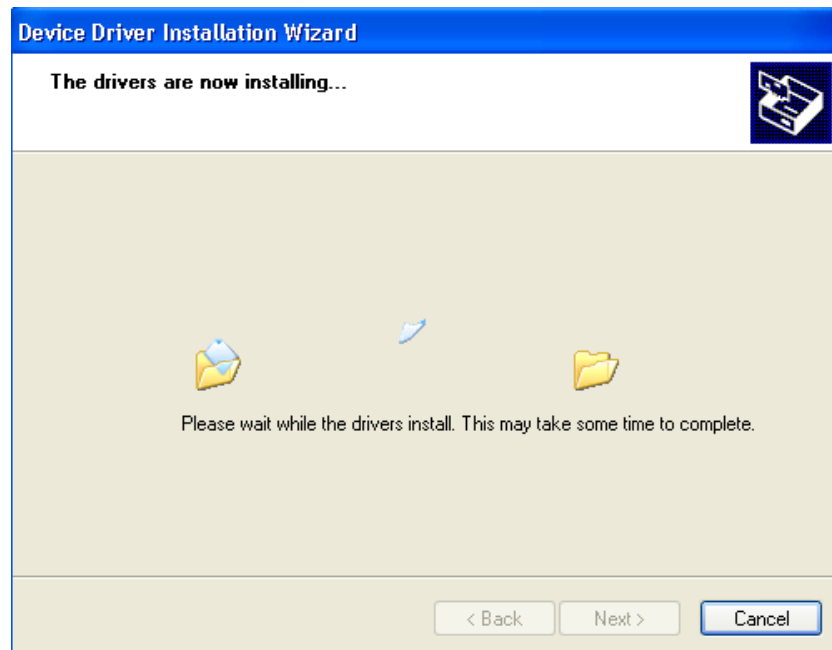


Figure1-2

3: When "Completing the Device Driver Installation Wizard" appears as shown in Figure1-3, press "Finish" to complete the installation process.

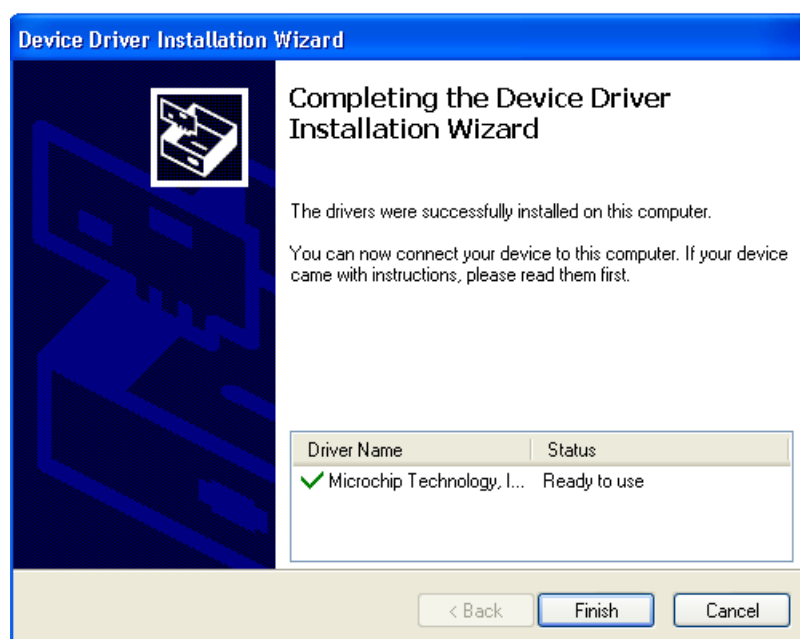


Figure 1-3